

Explore Urban Nature: Pollinator experiment.

Pollinators are very important insects, they make sure that plants are able to make new plants. As the insects visit different plants looking for food, they carry the **pollen** from one plant to another. This then allows plants to use the pollen to make seeds which then produces new plants!

Experiment: In groups choose an area around 1m by 1m.

Make sure there's some plants with flowers in there!

Then count how many of the pollinators come to your area.

Make sure to make a tally of numbers for each one! *||||*



Butterfly

Tally:



Silvery Moth

Tally:



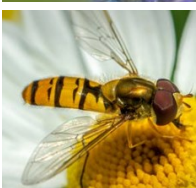
Bumblebee

Tally:



Tree Wasp

Tally:



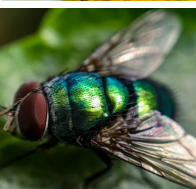
Hover Fly

Tally:



Oil Beetle

Tally:



Bluebottle Fly

Tally:



Red Soldier Beetle

Tally:



Lady-bug

Tally:

1. Which pollinator did you see the most?

2. See if everyone in your class had the same results.

Explore Urban Nature: Pollinator conclusions.

3. Using your findings fill in the table below.

